

Frontrunners in **open** CAD/CAM dentistry

Planmeca offers a comprehensive selection of high-end CAD/CAM solutions for various needs. Different clinical workflows are conveniently carried out from start to finish with our open, top-quality CAD/CAM devices and software. The choice is yours!



Scan



Intraoral scanners
Planmeca Emerald™ S
Planmeca Emerald™



Desktop scanner
Planmeca PlanScan® Lab



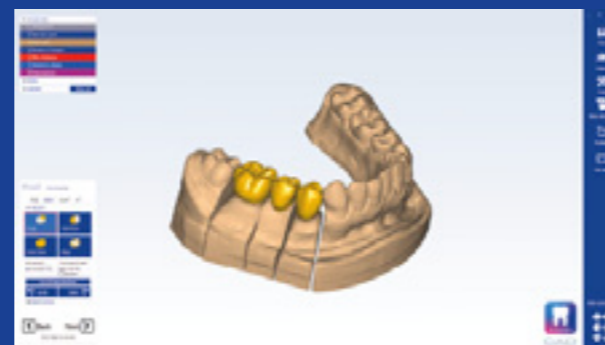
Examine – Analyse – Design



Scanning and analysing software
Planmeca Romexis® Model Analyser



Scanning and designing software
Planmeca PlanCAD® Easy



Advanced designing software
Planmeca PlanCAD® Premium



Create



Chairside milling units
Planmeca PlanMill® 40 S
Planmeca PlanMill® 30 S



3D printer
Planmeca Creo™ C5



Laboratory milling unit
Planmeca PlanMill® 50 S

Chairside milling units

Take milling to the next level

Our **Planmeca PlanMill®** milling units are the leading choice for fast and accurate milling directly at a dental clinic. With their enhanced performance and numerous smart features, the units offer the most advanced milling experience on the market.

- Linear motors for the highest precision
- On-board computer for an independent workflow and optimal control
- Expanded range of applications – abutments, crowns, inlays, onlays, veneers and up to 6-unit bridges
- Smart tool paths – optimised to suit material characteristics
- Guided maintenance – from daily cleanings and water changes to annual preventive maintenance notifications
- The pioneering **Planmeca Romexis® Clinic Management** software module for ultimate efficiency: real-time monitoring of task status, milling statistics, diagnostic log view and quick guides

Planmeca PlanMill® 40 S

Powerful and precise

- Fast milling speed – two spindles, 8–10 minutes per restoration
- Automated tool changer for 10 tools

Planmeca PlanMill® 30 S

Efficient and cost-effective

- High-speed single-spindle milling unit, 11–13 minutes per restoration
- Rotary axis enables milling both sides of the block with a single spindle
- Automated tool changer for 5 tools



3D printer for chairside manufacturing

The ultimate chairside 3D printer built for speed

Planmeca Creo® C5 is the combination of speed and precision you have been waiting for. Designed specifically for dental clinics, the durable and compact chairside 3D printer enables fabricating dental applications, such as surgical guides, in a single patient visit.



Planmeca Creo® C5 is a fast, calibration-free solution that has been developed in cooperation with some of the best clinical experts in dental technology. The distortion-free LCD technology and the robust aluminium body of the printer ensure outstanding mechanical precision, which results in highly accurate and predictable prints. The LCD technology allows you to print multiple objects at once without extended printing times, saving your time for the next patient.

Key benefits

- Industry quality at an accessible price
- LCD printing technology and aluminium construction allow highly fast and accurate printing
- Easy to take into operation – just plug and play
- Open import for STL and PLY file formats
- Pre-programmed optimised material settings
- No calibration or fixed service intervals needed
- Optimised printing materials with sophisticated resin handling system

