

.LOOKBOOK

Tailored Equipment Solutions



Empower your practice for a future in digital dentistry

 HENRY SCHEIN®

THE BRÅNEMARK CENTER





About The Practice

In 1982, Prof Patrick Henry started the first collaborative work with Prof Per Ingvar Brånemark studying a unique concept for bone anchored tooth replacement. This would later be known as “Osseointegration”. Since this time, The Brånemark Center has continued to add to this legacy of meaningful clinical research and has published widely in international peer reviewed journals.

The Brånemark Center was the first osseointegration training centre in the southern hemisphere and has become an important centre nationally and internationally for the training of general and specialist practitioners in the entire spectrum of implant-based rehabilitation.



State Of Art Facility

After much planning & collaboration, the new state of art facility was inaugurated in January 2018. In order to meet with The Brånemark Center unique practice design, Henry Schein & KaVo in Germany worked closely to develop a customised KaVo 1058 Life dental chair. Furthermore, the innovative project features equipment solutions enabling easy access to the dental chairs, cart delivery, ceiling mounted light & concealed cabinet mounted suction.



Due to the enhanced functionality of this dental solution, Henry Schein has started offering the same dental chair configuration to many other customers. Henry Schein is proud of partnering up with The Brånemark Center on the new facility which has been instrumental for them to continue the legacy by providing general dentists and specialist practitioners, courses to educate them, in the complexity of both the surgical placement and restoration of implants in the aesthetic zone.



TREATMENT
R O O M



Equipment



**KaVo
1058 Life**

DENTAL UNIT



**KaVo
540LED**

OPERATING LIGHT



**KaVo
Focus**

INTRAORAL X-RAY



**KaVo
Cart**

DELIVERY SYSTEM



**KaVo
OP3D PRO**

CBCT



**3Shape
TRIOS 4**

INTRAORAL SCANNER

In addition to a fully customised Kavo 1058 Life dental chair, the innovative project features equipment solutions enabling easy access to the dental chairs, cart delivery, ceiling mounted light & concealed cabinet mounted suction.

STERI
ROOM



Equipment



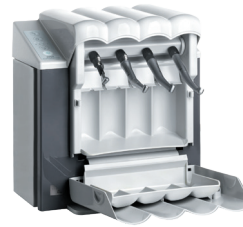
**Mocom
Tethys H10**

DISINFECTOR



**Mocom
Futura**

AUTOCLAVE



**KaVo
Quattro Care**

**HANDPIECES
MAINTENANCE**



**Coltene
BioSonic UC125**

ULTRASONIC CLEANER

W H Y HENRY SCHEIN

Interview with Graham & Glen
commenting on the relationship
with Henry Schein.



VISIT
THE BRÅNEMARK CENTER



VISIT
HENRY SCHEIN | EQUIPMENT



HENRY SCHEIN | THE BRÅNEMARK CENTER



Tom Mathers

Equipment Specialist, WA

Tom have started the journey with Henry Schein in 2011. Ever since, he has built a high level of rapport & reputation with the dentists & dental community in WA; credits to his high level of expertise in dental equipment and commitment to go above and beyond delivering dental solutions. In the 60 seconds with Tom, he comments on the requirements for the Brånemark Center new practice and the approach implemented by Henry Schein to deliver a fully customised solution.



60 Seconds With ...

Tom Mathers

When Glen and Graham approached Henry Schein with their equipment requirements for their new practice, we didn't have a ready to go solution to offer them. The brief was simple; access all around the dental chairs, cart delivery from the cabinetry, ceiling mounted light, concealed cabinet mounted suction and finally, it needed to look modern, clean and fit in with their bespoke practice design. Henry Schein worked closely with Kavo in Germany and our in house service technicians to come up with a Kavo 1058 Life Dental chair installed in such a way that met all of the requirements. The end result looked perfect and we have since started offering this same configuration to many other customers.

The Branemark Center was one of the first practices in Perth to install CBCT, as a Kavo flagship practice the Kavo 3D Pro was the perfect choice. The Durr Vistascan, Kavo Focus X-rays, Panasonic Intra-Oral Cameras and 3Shape TRIOS completes their digital suite of technology. Supplying the equipment and being involved with the prestigious Branemark Center project from start to finish has been a privilege.

.LOOKBOOK



Surgery Setup Solutions

1300 65 88 22 · www.henryscheinequipment.com.au · equipment@henryschein.com.au